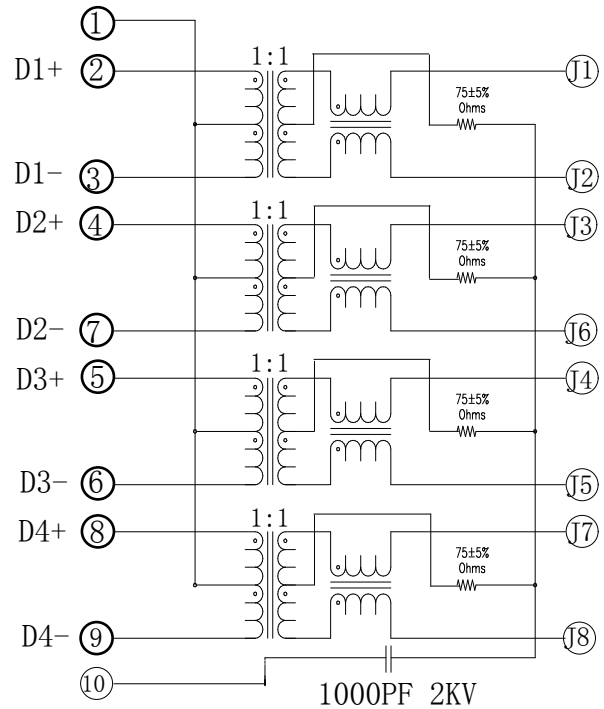


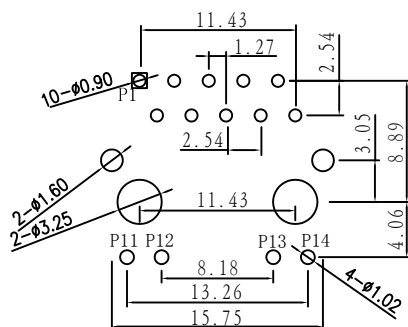
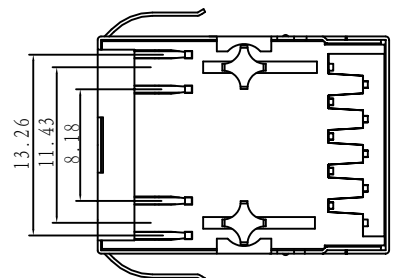
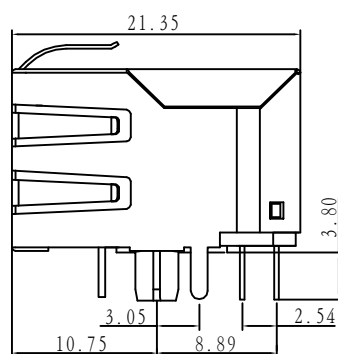
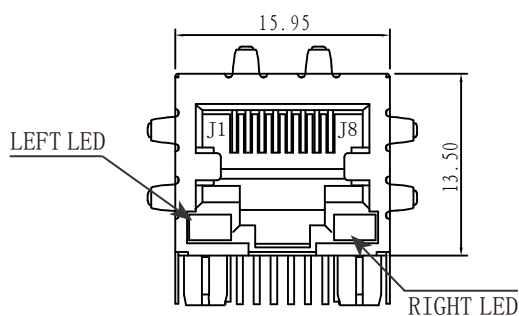
1. Turn Ratio (+/-2%) :
TX=1CT :1CT RX=1CT:1CT
2. Inductance OCL:
350uH Min @100KHz/0.1V ,8mA DC Bias
3. Insertion Loss:
-1.0dB Max @1.0-100MHz
4. Return Loss:
-20dB Min @1-10MHz
-16dB Min @10-30MHz
-12dB Min @30-60MHz
-10dB Min @60-100MHz
5. Cross talk:
-40dB Min @1-30MHz
-35dB Min @30-60MHz
-30dB Min @60-100MHz
6. Common Mode Rejection:
-30dB Min @1-50MHz
-20dB Min @50-150MHz
7. HIPOT TEST :1500V AC 1mA 6S
8. OPERA TING TEMPERA TURE RANGE:0-70°C

ELECTRICAL SPECIFICATIONS @ 25°C unless otherwise noted:

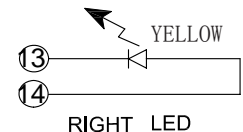
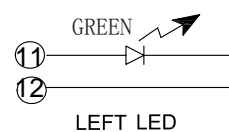
Schematics



Mechanical



P.C.B RECOMMENDED HOLE LAYOUT SEEN FROM COMPONENT SIDE.
ALL CENTERLINE DIMENSIONS ARE BASIC



Connect Material:

Housing:Thermoplastic,PBT,UL 94V-0,Black
Contact/Shield:Cooper alloy
Shield Plating:Nickel
Contact Plating:Selective gold 6u" Min

E-mail:szsmhdz@163.com
http://www.minghui.com



深圳市铭辉电子有限公司
Shenzhen MingHui Electronic Co.,Ltd.

单位 (units)	MM	设计 (draw)	凌志成	材料 (mt'1)	图名 (name)	RJ45 Modular Jack
比例 (scale)	1 : 1	审核 (ch'k)	朱建华	UNIT:mm .xx +/-0.25 xxx +/-0.13	料号 (Part number)	1x1Tab-Down 1000BASE
版次 (rev.)	A / 1	核准 (app'd)	朱建华	HOUSING	图档 (File Name)	MHGJ-9413-EGYNLF
视图 (view)		日期 (date)	2008.08.12	PIN		E:\工程图